



ಬೃಹತ್ ಬೆಂಗಳೂರು ಮಹಾನಗರ ಪಾಲಿಕೆ  
Bruhat Bengaluru Mahanagara Palike



# BBMP COVID-19 WAR ROOM 22.06.2023

BBMP / COVID-19 WAR ROOM / BULLETIN – 1186/ 22.06.2023 / #BBMPfightsCOVID19



# OVERVIEW OF COVID-19 IN BENGALURU

**CASE TRENDS** ACTIVE CASES **16**

| <u>Confirmed Cases</u>             | <u>Recovered Cases</u>             | <u>Death Cases</u>              |
|------------------------------------|------------------------------------|---------------------------------|
| <b>4</b><br>18,86,848 <sup>#</sup> | <b>6</b><br>18,69,831 <sup>#</sup> | <b>0</b><br>17,001 <sup>#</sup> |

**HOSPITALIZATION** **0**

| <u>ICU – V</u> | <u>ICU</u> | <u>HDU</u> | <u>General</u> |
|----------------|------------|------------|----------------|
| -              | -          | -          | -              |

INCLUDES GOVT. QUOTA AND PRIVATE WALK-IN HOSPITALIZATION

**VACCINATION** **3** 2,07,01,095<sup>#</sup>

| <u>First Dose</u>                  | <u>Second Dose</u>                 | <u>Precaution Dose</u>             |
|------------------------------------|------------------------------------|------------------------------------|
| <b>1</b><br>96,89,944 <sup>#</sup> | <b>1</b><br>95,11,719 <sup>#</sup> | <b>1</b><br>14,99,432 <sup>#</sup> |

**TRIAGING**

| <u>MTU</u>         |
|--------------------|
| <b>2</b>           |
| <u>Tele Triage</u> |
| <b>1</b>           |

**ACTIVE CZs** **0**

| <b>0</b>                       |
|--------------------------------|
| <u>MCZs (&lt; 5 cases)</u>     |
| <b>0</b>                       |
| <u>Clusters (&gt; 5 cases)</u> |
| <b>0</b>                       |

**TESTING** **744** 3,24,42,189<sup>#</sup>

| <u>Positivity :0.47%</u>        | <u>RAT</u> | <u>RTPCR</u> |
|---------------------------------|------------|--------------|
| <small>*FOR LAST 7 DAYS</small> | <b>258</b> | <b>486</b>   |

# : indicates cumulative numbers till date



# ABSTRACT OF COVID-19 SCENARIO IN BENGALURU



|                                   | MALE                         |             |            | FEMALE                        |             |            | TRANSGENDER                     |             |            | TOTAL         |             |            |
|-----------------------------------|------------------------------|-------------|------------|-------------------------------|-------------|------------|---------------------------------|-------------|------------|---------------|-------------|------------|
|                                   | Last 24 Hours                | Last 7 Days | Cumulative | Last 24 Hours                 | Last 7 Days | Cumulative | Last 24 Hours                   | Last 7 Days | Cumulative | Last 24 Hours | Last 7 Days | Cumulative |
| <b>Positive Cases</b>             | 3                            | 15          | 11,11,988  | 1                             | 9           | 7,74,664   | 0                               | 0           | 196        | 4             | 24          | 18,86,848  |
| <b>Recovered Cases</b>            | 3                            | 10          | 10,99,638  | 3                             | 9           | 7,69,063   | 0                               | 0           | 187        | 6             | 19          | 18,69,831  |
| <b>Death Cases</b>                | 0                            | 0           | 10,770     | 0                             | 0           | 6,227      | 0                               | 0           | 4          | 0             | 0           | 17,001     |
| <b>Total Tests Done</b>           | <b>In Last 24 hrs. : 744</b> |             |            | <b>In last 7 days : 5,075</b> |             |            | <b>Cumulative : 3,24,42,189</b> |             |            |               |             |            |
| <b>Vaccine Doses Administered</b> | <b>In Last 24 hrs. : 3</b>   |             |            | <b>In last 7 days : 40</b>    |             |            | <b>Cumulative : 2,07,01,095</b> |             |            |               |             |            |
| <b>ACTIVE CASES</b>               |                              |             |            |                               |             |            |                                 |             | <b>16</b>  |               |             |            |

\*Covid deaths occurred today : 00 | Covid deaths occurred beyond last 24hrs., reported today : 00

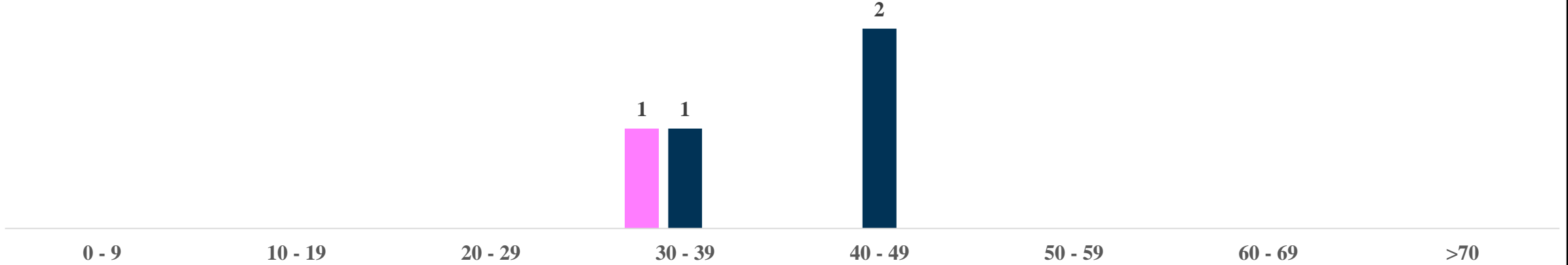


# LAST 24 HOURS AGE GROUP AND GENDER WISE DISTRIBUTION

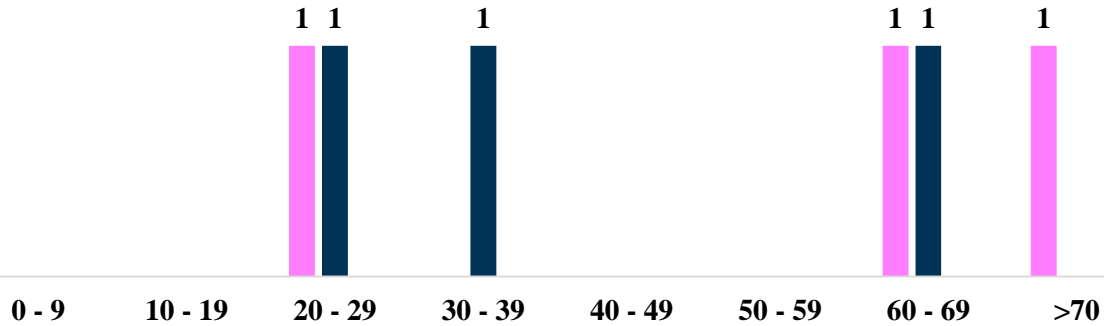


## Positive Cases : 4

Female Male Transgender



## Recovered Cases : 6



## Death Cases : 0

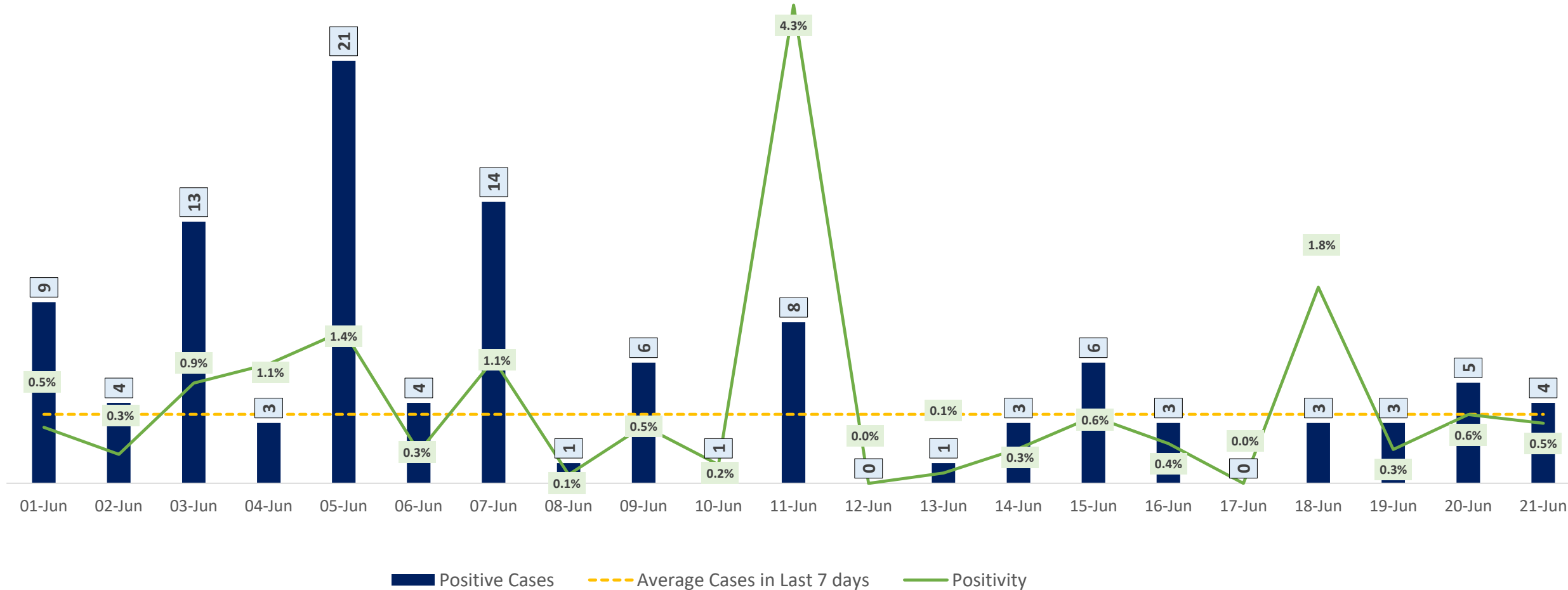




# POSITIVITY RATE OF BENGALURU – LAST 21 DAYS



Average Cases in Last 7 days : 3

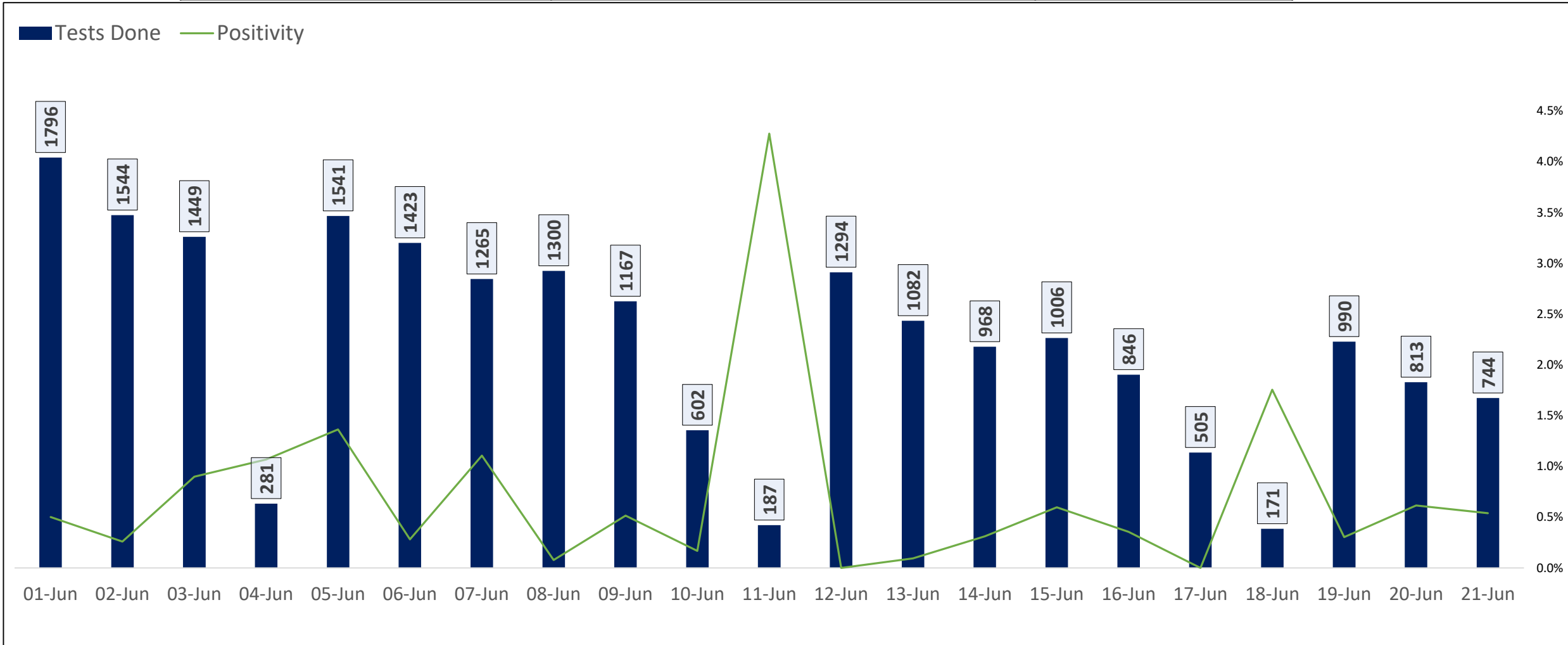




# TESTING TRENDS IN BENGALURU

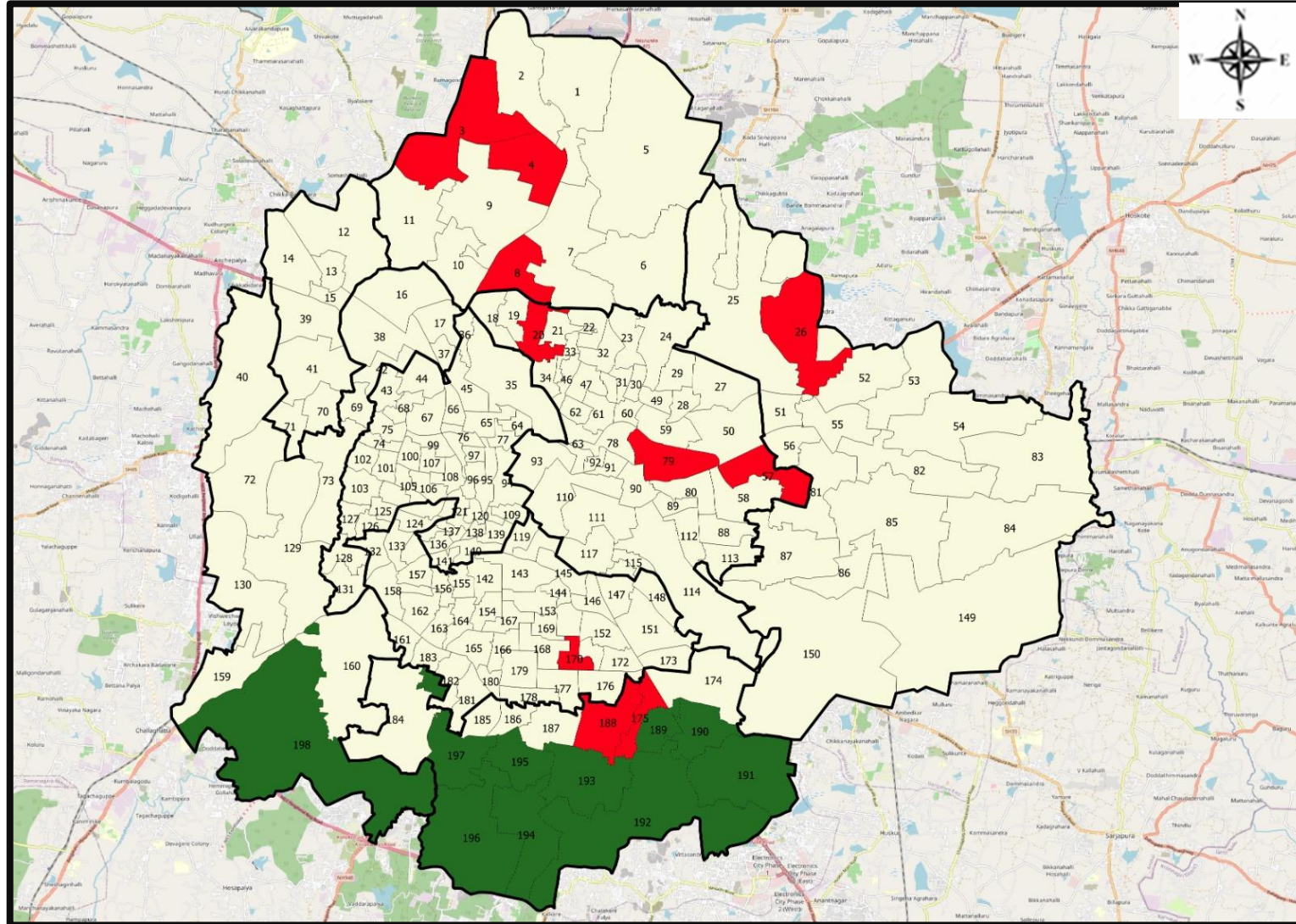


| Total Test Conducted Till Date | Test Conducted Last 24 hours | Last 7 Days Average |
|--------------------------------|------------------------------|---------------------|
| 3,24,42,189                    | 744                          | 725                 |





# BENGALURU URBAN MAP SHOWING TREND OF POSITIVE CASES IN LAST 7 DAYS



### Top 10 wards reporting highest number of positive cases in last 10 days

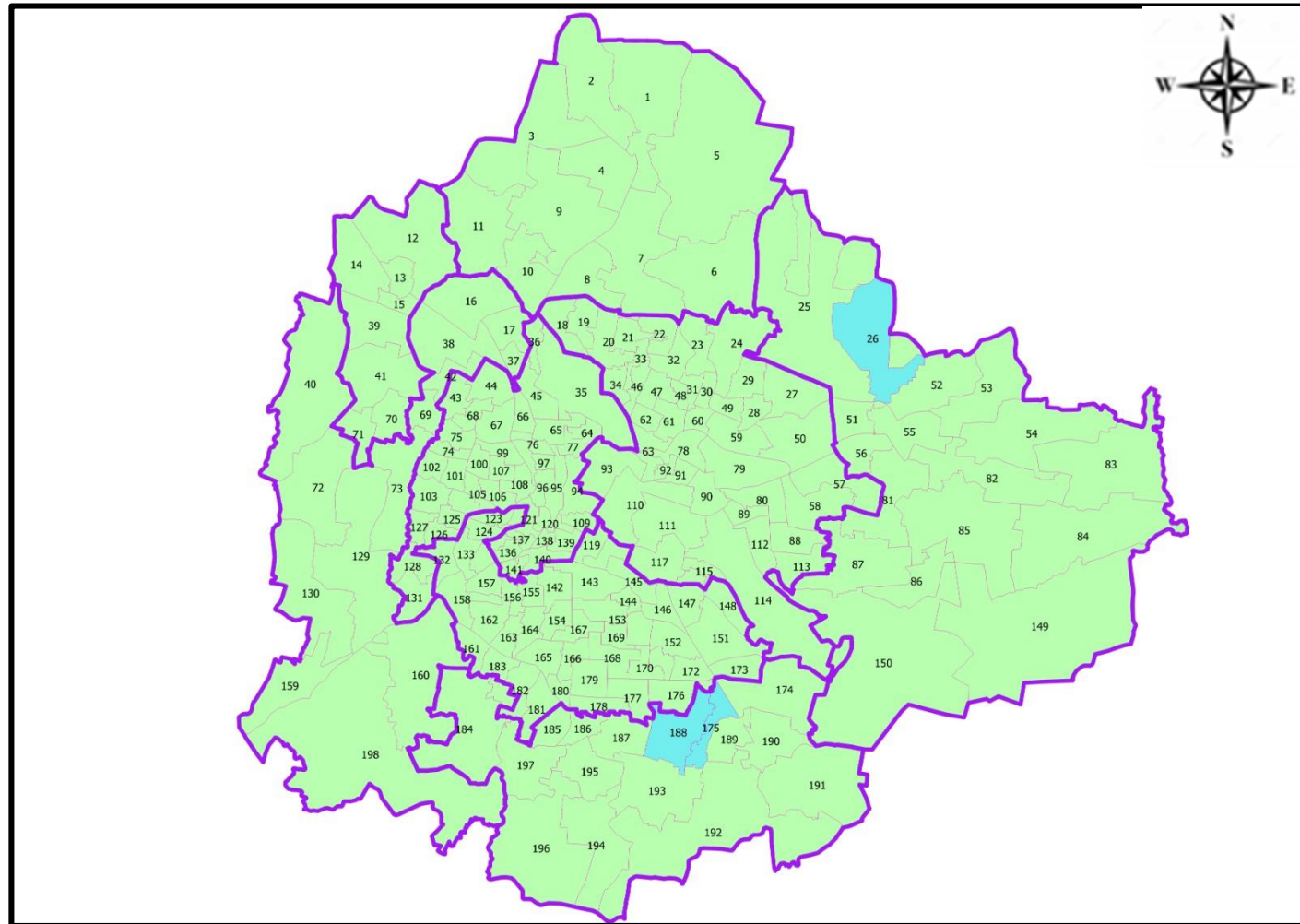
| Ward No. | Ward Name                | Daily Cases Average |
|----------|--------------------------|---------------------|
| 188      | Bilekhali                | 1                   |
| 26       | Ramamurthy Nagar         | 1                   |
| 175      | Bommanahalli             | 1                   |
| 3        | Atturu                   | 1                   |
| 4        | Yelahanka Satellite Town | 1                   |
| 8        | Kodigehalli              | 1                   |
| 20       | Ganga Nagar              | 1                   |
| 57       | CV Raman Nagar           | 1                   |
| 79       | Sarvagna Nagar           | 1                   |
| 170      | Jayanagar East           | 1                   |

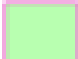
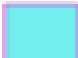




### Top 10 wards reporting least number of positive cases in last 7 days

| Ward No. | Ward Name       | Daily Cases Average |
|----------|-----------------|---------------------|
| 198      | Hemmigepura     | 0                   |
| 197      | Vasanthpura     | 0                   |
| 196      | Anjanapura      | 0                   |
| 195      | Konanakunte     | 0                   |
| 194      | Gottigere       | 0                   |
| 193      | Arakere         | 0                   |
| 192      | Begur           | 0                   |
| 191      | Singasandra     | 0                   |
| 190      | Mangammanapalya | 0                   |
| 189      | Hongasandra     | 0                   |



# BENGALURU MAP SHOWING INTENSITY OF POSITIVE CASES IN LAST 7 DAYS



-  **Level 1 : 0 to 1 Cases**
-  **Level 2 : 1 to 3 Cases**
-  **Level 3 : 3 to 5 Cases**
-  **Level 4 : 5 to 10 Cases**
-  **Level 5 : More than 10 Cases**
-  **Zone Boundaries**

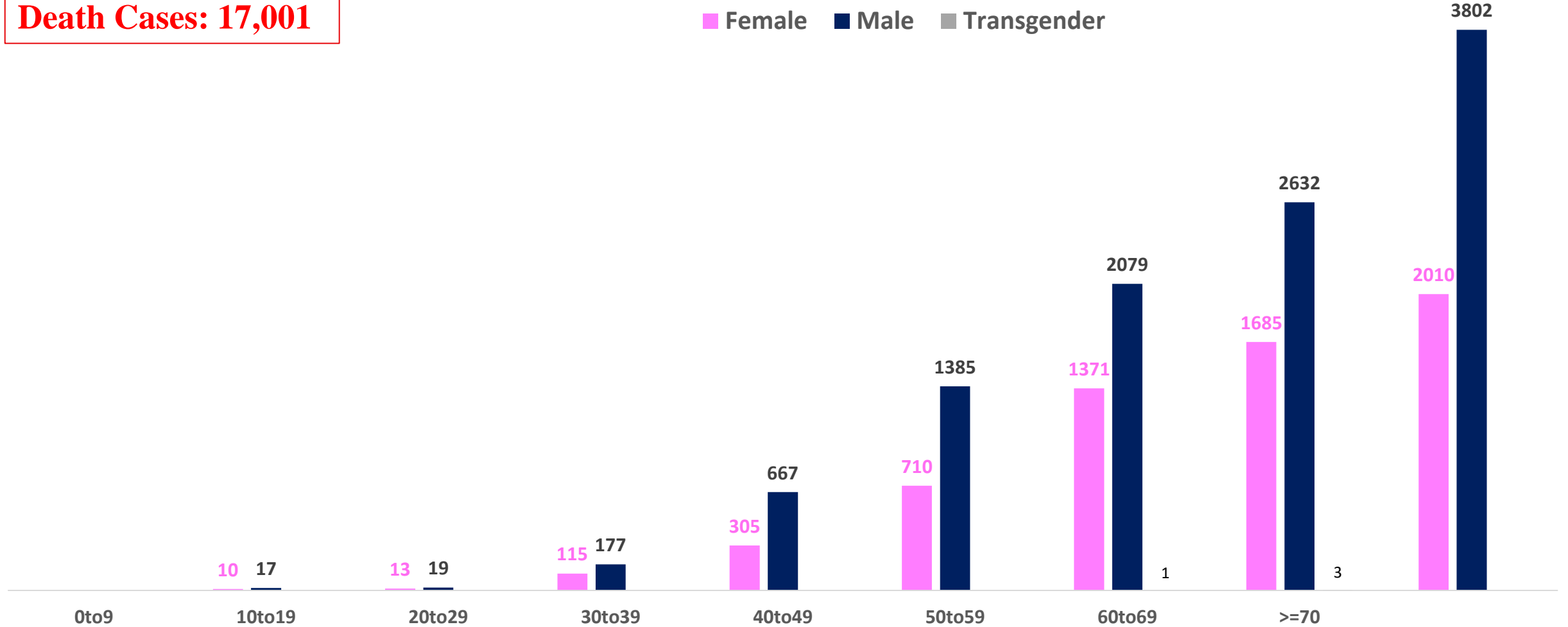




# AGE AND GENDER WISE DISTRIBUTION OF DEATH CASES



**Death Cases: 17,001**





# SNAPSHOT OF COVID-19 CASES IN BENGALURU URBAN



**Total Wards With  
< = 1 Cases\* :  
186**

**Tests Conducted  
on 21.06.2023:  
744**

**Recovery  
Rate\*:  
99.10%**

**Total  
Active Cases :  
16**

**Total Vaccinated  
on 21.06.2023:  
3**





**Positivity  
Rate\* :  
0.47%**

**Active  
Rate\*:  
0.00%**

**Case  
Fatality Rate\* :  
0.00%**

\*Total positive cases In the past 7 days

\*CFR and positivity is for Past 7 days

|                                      |   |
|--------------------------------------|---|
| <b>Download BBMP Bulletin</b>        | <a href="https://apps.bbmpgov.in/covid19/mediabulletin.php">https://apps.bbmpgov.in/covid19/mediabulletin.php</a>   |
| <b>To register for vaccination :</b> | <a href="https://selfregistration.cowin.gov.in/">https://selfregistration.cowin.gov.in/</a>   |
| <b>BBMP COVID19 Dashboard:</b>       | <a href="https://apps.bbmpgov.in/covid19/">https://apps.bbmpgov.in/covid19/</a>   |
| <b>Follow us on:</b>                 |  <a href="http://www.facebook.com/bbmp.comm1/">www.facebook.com/bbmp.comm1/</a>  |
|                                      |  <a href="https://twitter.com/BBMPCOMM">twitter.com/BBMPCOMM</a>   |
|                                      |   <a href="https://www.instagram.com/BBMPSplHealth">BBMPSplHealth</a> |

Issued by:

Honorable Chief Commissioner, BBMP  
Special Commissioner Health, BBMP  
MD, Bengaluru Smart City Limited

**THANK YOU !**

